

CPS TYPE WALL OUTLET

with Colored Aluminium Handles



FEATURES

- Quick connection and non-interchangeable by the difference of pin-guide hole
- Color coded handles for clear identification
- Built-in a stop valve for easy maintenance
- Suits various installation requirement; wall, bed-head unit, pendant, etc.

The CPS type wall outlet supplies medical gases more safely and securely at the area, i.e., O.T., ICU, Recovery, ward and so on. An on-wall type to be surface-mounted on the wall, or a in-wall type to be recessed into the wall, is available.

CPS TYPE WALL OUTLET

with Colored Aluminium Handles

Configuration

A wall outlet is composed of required number of outlet valves (up to four), a box made of cold rolled carbon steel sheet, a dressing plate made of stainless steel sheet and a hook base for the wall suction unit. Oxygen, nitrous oxide, compressed air and vacuum outlets and a hook base are stationed together in variety of combination; single, double, triple and quadruple.

Safety Features

- Adapters and secondary equipment are plugged into outlet valves with one-hand operation. Once plugged in, they are securely locked and released only when the handle of outlet valve is turned.
- Outlet valve and adapter are made non-interchangeable by the difference of pin-guide holes. An oxygen adapter fits only oxygen outlet valve thus does not fit any other outlet valve.(Fig.1)
- A stop valve is provided at the base of each outlet valve for easier maintenance service without stopping gas flow to other outlets. Outlet valves are easily dismantled and disassembled for inspection and exchange of parts.

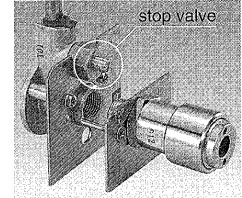
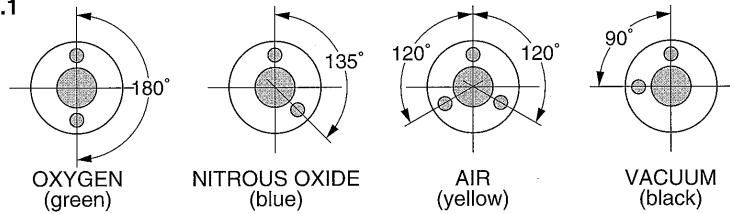
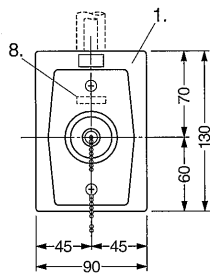


Fig.1

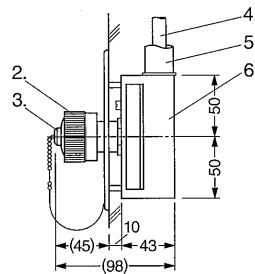


Dimensions & Combination

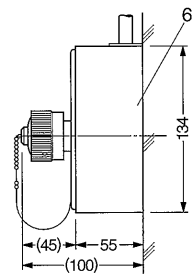
Single Gas



Recessed Type



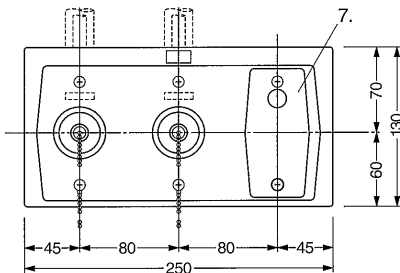
Exposed Type



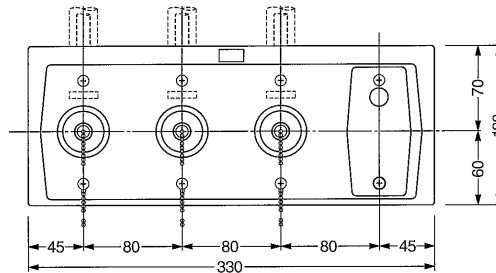
No. Components

- Dressing Plate
- Outlet Valve Handle
- Dust Cap
- 1/4(B) Copper Pipe
* 3/8(B) Flare connection for down drop
- Guard Pipe
- Outlet Box
- Hook Base
- Gas Name

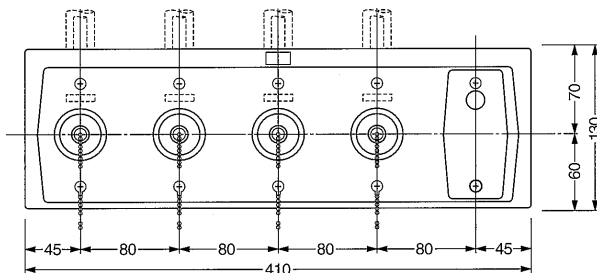
Double Gases with a Hook Base



Triple Gases with a Hook Base



Quadruple Gases with a Hook Base



For Ordering Information

Please specify the combination and gas names and whether it is recessed type (concealed installation) or exposed type (surface installation).

* Sizes are in millimeters. Above front views show recessed type outlets. Exposed ones are 4mm bigger in wide and height than the recessed type same gas outlets.

* The appearance and the specifications shall be changed without prior notice.